



Ensuring User-side Fairness in Dynamic Recommender Systems

Hyunsik Yoo
University of Illinois
Urbana-Champaign
hy40@illinois.edu

Zhichen Zeng
University of Illinois
Urbana-Champaign
zhichenz@illinois.edu

Jian Kang
University of Rochester
jian.kang@rochester.edu

Ruizhong Qiu
University of Illinois
Urbana-Champaign
rq5@illinois.edu

David Zhou
University of Illinois
Urbana-Champaign
david23@illinois.edu

Zhining Liu
University of Illinois
Urbana-Champaign
liu326@illinois.edu

Fei Wang
Amazon.com, Inc.
feiww@amazon.com

Charlie Xu
Amazon.com, Inc.
caizhx@amazon.com

Eunice Chan
University of Illinois
Urbana-Champaign
ecchan2@illinois.edu

Hanghang Tong
University of Illinois
Urbana-Champaign
htong@illinois.edu

ABSTRACT

User-side group fairness is crucial for modern recommender systems, alleviating performance disparities among user groups defined by sensitive attributes like gender, race, or age. In the ever-evolving landscape of user-item interactions, continual adaptation to newly collected data is crucial for recommender systems to stay aligned with the latest user preferences. However, we observe that such continual adaptation often worsen performance disparities. This necessitates a thorough investigation into user-side fairness in dynamic recommender systems. This problem is challenging due to distribution shifts, frequent model updates, and non-differentiability of ranking metrics. To our knowledge, this paper presents the first principled study on ensuring user-side fairness in dynamic recommender systems. We start with theoretical analyses on fine-tuning v.s. retraining, showing that the best practice is incremental fine-tuning with restart. Guided by our theoretical analyses, we propose FAir Dynamic rEcommender (FADE), an end-to-end fine-tuning framework to dynamically ensure user-side fairness over time. To overcome the non-differentiability of recommendation metrics in the fairness loss, we further introduce Differentiable Hit (DH) as an improvement over the recent NeuralNDCG method, not only alleviating its gradient vanishing issue but also achieving higher efficiency. Besides that, we also address the instability issue of the fairness loss by leveraging the competing nature between the recommendation loss and the fairness loss. Through extensive experiments on real-world datasets, we demonstrate that FADE effectively and efficiently reduces performance disparities with little sacrifice in the overall recommendation performance.¹

¹The code and Online Appendix are available at: <https://github.com/hsyoo32/fade>.

Permission to make digital or hard copies of all or part of this work for personal or classroom use is granted without fee provided that copies are not made or distributed for profit or commercial advantage and that copies bear this notice and the full citation on the first page. Copyrights for components of this work owned by others than the author(s) must be honored. Abstracting with credit is permitted. To copy otherwise, or republish, to post on servers or to redistribute to lists, requires prior specific permission and/or a fee. Request permissions from permissions@acm.org.

WWW '24, May 13–17, 2024, Singapore, Singapore.

© 2024 Copyright held by the owner/author(s). Publication rights licensed to ACM.

ACM ISBN 979-8-4007-0171-9/24/05...\$15.00

<https://doi.org/10.1145/3589334.3645536>

CCS CONCEPTS

• Information systems → Data mining; • Computing methodologies → Machine learning.

KEYWORDS

recommender systems; user-side fairness; dynamic updates

ACM Reference Format:

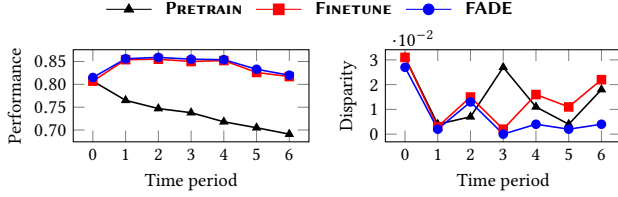
Hyunsik Yoo, Zhichen Zeng, Jian Kang, Ruizhong Qiu, David Zhou, Zhining Liu, Fei Wang, Charlie Xu, Eunice Chan, and Hanghang Tong. 2024. Ensuring User-side Fairness in Dynamic Recommender Systems. In *Proceedings of the ACM Web Conference 2024 (WWW '24)*, May 13–17, 2024, Singapore. ACM, New York, NY, USA, 12 pages. <https://doi.org/10.1145/3589334.3645536>

1 INTRODUCTION

Recommender systems are essential for delivering high-quality personalized recommendations in a two-sided market (i.e., user-side and item-side) [8, 40, 46]. In this market, users provide feedback on recommended items, and the system refines the recommendations to better reflect their preferences. However, these recommender systems can perform poorly for users from certain demographic groups even while delivering high-quality recommendations on average [5, 37]. For example, a job recommender system might recommend more irrelevant job opportunities to female engineers in STEM (Science, Technology, Engineering, and Mathematics), which can significantly impact their career growth [14, 19]. Thus, it is important to alleviate the performance disparity between different user groups in recommender systems [20].

Although there is a parallel line of research on item-side fairness, those methods do not apply to user-side fairness due to the fundamental distinction between user- and item-side fairness. In essence, user-side fairness is concerned with ensuring equitable recommendation quality for different users, while item-side fairness focuses on providing equal exposure opportunities for items within recommendations, often addressing the so-called popularity bias of items through debiasing techniques. For example, several works for item-side fairness [33, 34, 44, 45] calibrates predicted ratings with item popularity, which does not apply to user-side fairness.

Furthermore, due to the evolving nature of user-item interactions, real-world recommender systems continually adapt to new data



(a) Recommendation performance over time (b) Performance disparity between user groups

Figure 1: Even though incremental fine-tuning with new data (red curve) upholds recommendation performance compared to pretrain (black curve), the disparity gradually expands over time without fairness regularization. (See §4 for detail.)

over time to improve recommendation quality [17, 42]. However, as shown in Fig. 1, neglecting fairness during dynamic adaptation leads to performance disparity between user groups persisting or even expanding over time. This highlights the importance of maintaining user-side fairness in dynamic recommendation.

Despite its critical importance, to the best of our knowledge, user-side fairness [10, 20] has not been explored in the context of dynamic recommendation, which is in stark contrast to the extensive research effort on item-side fairness in dynamic recommendation [11, 26, 44]. As item-side methods are inapplicable to user-side fairness, a thorough study of user-side fairness in dynamic recommendation will substantially expand the frontiers of fair dynamic recommendation and establish a prospective foundation for future research on two-sided fairness [7, 41] in dynamic recommendation.

This paper presents the first principled study of *user-side fairness* in *dynamic/continual* recommender systems. We identify and address the following challenges: **(C1) Distribution shifts.** Constant emergence of new users/items and evolving user preferences lead to distribution shifts. Distribution shifts not only affects recommendation performance but also worsens performance disparity among user groups over time. **(C2) Frequent model updates.** Due to distribution shifts in dynamic recommendation, recommender systems need frequent updates to cater to current user preferences. This imposes *efficiency* requirements on the model updating method. However, existing postprocessing methods involve time-intensive re-ranking [10, 20], which are inefficient for frequent model updates. **(C3) Non-differentiability of ranking metrics.** The sorting operation in ranking metrics is non-differentiable. This raises a critical challenge in end-to-end training because we cannot directly use the non-differentiable performance disparity as the fairness loss. Even if one resorts to postprocessing methods like re-ranking [10, 20] which does not involve end-to-end training, they critically suffer from the existing performance disparity in candidate item lists.

To address the challenges, we propose **FAir Dynamic rEcommender (FADE)**, an *end-to-end* framework employing an incremental *fine-tuning* strategy to dynamically alleviate performance disparity between user groups. Specifically, our key contributions are:

- **Problem.** We observe that the user-side performance disparity tends to persist or worsen over time, despite improvements in recommendation performance. To our knowledge, we are the first to study user-side fairness in dynamic/continual recommendation.
- **Theory.** To ground the design of our method, we theoretically analyze *fine-tuning* v.s. *retraining* in terms of generalization error (recommendation & fairness) under distribution shifts. Our

Theorems 3.1 & 3.2 show that the best practice is incremental fine-tuning with restart.

- **Algorithm.** Based on theoretical analyses, we propose FADE, a novel dynamic recommender based on incremental fine-tuning that balances both recommendation quality and user-side fairness. To overcome the non-differentiability of recommendation metrics in the fairness loss, we further introduce *Differentiable Hit* (DH) as an improvement over the recent NeuralNDCG method [28], not only alleviating its gradient vanishing but also achieving higher efficiency. Besides that, we also address the instability of the fairness loss by leveraging the competing nature between the recommendation loss and the fairness loss (Proposition 3.3).
- **Experiments.** Empirical experiments on real-world datasets demonstrate that FADE effectively reduces performance disparity (average decrease of 48.91%) without significantly compromising overall performance over time (average drop of 2.44%).

2 PROBLEM DEFINITION

In this section, we first present the key notations in the paper. Then we provide preliminaries on the settings of dynamic recommendation and user-side fairness. Finally, we formally define the problem of user-side fairness in dynamic recommender systems.

Notations. Table 1 provides a list of our symbols. We use $\mathcal{D}_t = \{\mathcal{U}_t, \mathcal{I}_t, \mathcal{E}_t, \mathbf{Y}_t\}$ to denote the dataset collected at time period $t \forall t \in \{1, \dots, T\}$,² where the subscript t indicates the time period t , \mathcal{U}_t is the user set, \mathcal{I}_t is the item set, \mathcal{E}_t is the user-item interaction set, and \mathbf{Y}_t is the user-item interaction matrix. We consider binary user-item interaction in this work, i.e., $\mathbf{Y}_t[u, i] = 1$ if user u has interacted with item i within the t -th time period, and 0 otherwise. The initial user set, item set, user-item interaction set, and the user-item interaction matrix *before* the first time period (i.e., pretrain data) is denoted as $\mathcal{U}_0, \mathcal{I}_0, \mathcal{E}_0$, and \mathbf{Y}_0 , respectively. Lastly, we denote the subscript $:t$ as time period from the beginning up to t .

Dynamic/online recommendation. We assume that an initial recommendation model has been pre-trained with $\mathcal{D}_0 = \{\mathcal{U}_0, \mathcal{I}_0, \mathcal{E}_0, \mathbf{Y}_0\}$ in an offline manner, and then the model is trained solely with the newly collected data \mathcal{D}_t at the current time period t , $\forall t \in \{1, \dots, T\}$. Once the model has been trained/fine-tuned on \mathcal{D}_t , a top- K recommendation list $[i_1, \dots, i_K]$ for each user u , ranked by the predicted scores $\hat{\mathbf{Y}}_t[u, i], \forall i$, is generated.

User-side fairness. Given a binary sensitive attribute $a \in \{0, 1\}$ (e.g., gender), we focus on ensuring user-side group fairness, i.e., mitigate the recommendation performance disparity between the advantaged user group ($a = 0$) and the disadvantaged user group ($a = 1$) [20]. More specifically, the user-side performance disparity at any time period t is defined as follows.

DEFINITION 1 (User-side performance disparity [20]). *For a time period t with ground-truth test interaction set $\mathcal{D}_t^{\text{test}}$ and for a recommendation metric $\text{Perf}(\cdot)$ (such as NDCG@ K or F1@ K), the user-side performance disparity is defined by*

$$\text{PD}_t := \text{Perf}(\mathcal{D}_t^{\text{test}} | a = 0) - \text{Perf}(\mathcal{D}_t^{\text{test}} | a = 1). \quad (1)$$

Problem definition. We formally define our problem as follows:

PROBLEM 1 (User-side fairness in dynamic recommender systems). **Input:** (1) a pre-trained recommendation model with parameters \mathcal{W}_0 ; (2) a continually collected dataset $\mathcal{D}_t = \{\mathcal{U}_t, \mathcal{I}_t, \mathcal{E}_t, \mathbf{Y}_t\}, \forall t \in$

²Depending on the system, the time period could be either a specific time frame (e.g., daily or weekly) or until a specific number of interactions has been collected.

$\{1, \dots, T\}$; (3) a binary sensitive attribute $a \in \{0, 1\}$; (4) a specific performance evaluation metric $\text{Perf}(\cdot)$ to calculate PD_t (see Eq. (1)).

Output: For any time period t , a fairness-regularized model with the parameters \mathcal{W}_t that (1) optimizes the PD_t to be close to zero and (2) achieves high-quality recommendations.

3 FADE: A FAIR DYNAMIC RECOMMENDER

In this section, we present FADE, a novel fair dynamic recommender system designed to effectively and efficiently reduce performance disparity over time. We begin with theoretical analyses on fine-tuning v.s. retraining in the context of dynamic fair recommendation in §3.1, demonstrating that the best practice is incremental fine-tuning with restart. Then in §3.2, we introduce our incremental fine-tuning strategy that balances both recommendation performance and user-side fairness. To address the non-differentiability challenge, we improve NeuralNDCG [28] and develop *Differentiable Hit* (DH), an efficient approximation scheme of the non-differentiable ranking metric, in §3.3. Building upon DH, we propose a differentiable and lightweight loss function for user-side fairness in §3.4. Our method is presented in Algorithm 1.

3.1 Fine-Tuning v.s. Retraining

Common practice for evolving data involves incremental *fine-tuning* and *retraining*. To obtain a deeper understanding of their behaviors in fair dynamic recommendation to guide the design of our method, we theoretically analyze their generalization error (recommendation & fairness) under distribution shift. Suppose that the model is currently trained with $\mathcal{D}_0 \cup \dots \cup \mathcal{D}_{t_{te}-1}$ and is to be tested on $\mathcal{D}_{t_{te}}$. For each time period t , let $m_t := |\mathcal{E}_t|$ denote the size of dataset \mathcal{D}_t , let $\mathcal{L}^{\mathcal{D}_t}(\mathcal{W})$ denote the empirical loss (recommendation + fairness (e.g., Eq. (7))) over dataset \mathcal{D}_t , let $\mathcal{L}_t(\mathcal{W}) := \mathbb{E}_{\mathcal{D}_t}[\mathcal{L}^{\mathcal{D}_t}(\mathcal{W})]$ denote the true generalization loss, and let $\mathcal{L}_t^* := \inf_{\mathcal{W}} \mathcal{L}_t(\mathcal{W})$ denote the optimal loss value. To obtain concrete yet non-trivial theoretical results, we let $m_1 = \dots = m_{t_{te}-1} \ll m_0$ and make mild and realistic assumptions for theoretical analysis (see §A.1).

Next, we introduce our theoretical measure of distribution shift. There are two sources of distribution shift over time: *covariate shift* and *concept drift*. In dynamic recommendation, covariate shift corresponds to shift of user/item attribute distributions (i.e., the distribution of $(\mathcal{U}_t, \mathcal{I}_t, \mathcal{E}_t)$), and concept drift corresponds to evolution of user preferences (i.e., the conditional distribution $Y_t | (\mathcal{U}_t, \mathcal{I}_t, \mathcal{E}_t)$).

Regarding covariate shift, a classic measure is the *discrepancy distance* [24] (a generalized $\mathcal{H}\Delta\mathcal{H}$ distance [3]):

$$d_{t,t_{te}}^{\mathcal{H}\Delta\mathcal{H}} := \sup_{\mathcal{W}, \mathcal{W}'} \left| |\mathcal{L}_t(\mathcal{W}) - \mathcal{L}_t(\mathcal{W}')| - |\mathcal{L}_{t_{te}}(\mathcal{W}) - \mathcal{L}_{t_{te}}(\mathcal{W}')| \right|. \quad (2)$$

The intuition is that if there is no covariate shift between t and t_{te} , then for any two models $\mathcal{W}, \mathcal{W}'$, their difference of \mathcal{L} should not differ between t and t_{te} , leading to $d_{t,t_{te}}^{\mathcal{H}\Delta\mathcal{H}} = 0$. Regarding concept drift, we use a classic measure called *combined error* [3]:

$$d_{t,t_{te}}^{\text{comb}} := \inf_{\mathcal{W}} (\mathcal{L}_t(\mathcal{W}) + \mathcal{L}_{t_{te}}(\mathcal{W})) - \mathcal{L}_t^* - \mathcal{L}_{t_{te}}^*. \quad (3)$$

The intuition is that if there is no concept drift between t and t_{te} , then \mathcal{L}_t and $\mathcal{L}_{t_{te}}$ can achieve their minimum values with the same model \mathcal{W} , leading to $d_{t,t_{te}}^{\text{comb}} = 0$. Together, we define a unified measure of distribution shift as follows by combining the measures

Table 1: Main symbols used in this paper.

Symbol	Description
\mathcal{D}_t	Dataset collected at time period t
$\mathcal{U}_t, \mathcal{I}_t, \mathcal{E}_t$	Sets of users, items, and their interactions at time period t
Y_t	User-item interaction matrix at time period t
\hat{Y}_t	User-item predicted score matrix at time period t
\mathcal{W}_t	Set of model parameters at time period t
a	Binary sensitive attribute of a user
$\mathcal{L}_{\text{rec}}, \mathcal{L}_{\text{fair}}$	Recommendation loss and fairness loss, respectively
C_u, N	Set of candidate items for a user u and its size
s_u	Unsorted list of recommendation scores of items in C_u
r_u	List of items in C_u ranked by their scores in s_u
P_u, \hat{P}_u	Permutation matrix and relaxed permutation matrix for s_u
λ	Scaling parameter for $\mathcal{L}_{\text{fair}}$
τ	Temperature parameter for \hat{P}_{s_u}
μ	The number of negative items in C_u
n	The number of negative items for \mathcal{L}_{rec}

of covariate shift and concept drift:

$$d_{t,t_{te}} := d_{t,t_{te}}^{\mathcal{H}\Delta\mathcal{H}} + d_{t,t_{te}}^{\text{comb}}. \quad (4)$$

Building upon the measure of distribution shift, we theoretically analyze the generalization error (recommendation performance & user-side fairness) of fine-tuning and retraining in the presence of distribution shift (Theorems 3.1 & 3.2).

THEOREM 3.1 (FINE-TUNING). *Let $\mathcal{L}_{t_{te}}^{\text{ft}}$ denote the best possible loss of fine-tuning till $\mathcal{D}_{t_{te}-1}$. Suppose that the number of fine-tuning epochs at each time period $t \geq 1$ is decided according to the proximity assumption [30] with some $0 < \gamma < 1$ (see §A.1 for detail). Then with probability at least $1 - \delta$,*

$$\mathcal{L}_{t_{te}}^{\text{ft}} \leq \mathcal{L}_{t_{te}}^* + \frac{(1-\gamma) \left(2 \sum_{t=0}^{t_{te}-1} \gamma^{t_{te}-t-1} d_{t,t_{te}} + 4 \sqrt{\frac{\gamma^{2t_{te}-2} + 1 - \gamma^{2t_{te}-2}}{m_0 + (1-\gamma^2)m_1}} \log \frac{2}{\delta} \right)}{1-\gamma^{t_{te}}}. \quad (5)$$

THEOREM 3.2 (RETRAINING). *Let $\mathcal{L}_{t_{te}}^{\text{rt}}$ be the best possible loss of retraining on $\mathcal{D}_0 \cup \dots \cup \mathcal{D}_{t_{te}-1}$. With probability at least $1 - \delta$,*

$$\mathcal{L}_{t_{te}}^{\text{rt}} \leq \mathcal{L}_{t_{te}}^* + \frac{2m_0 d_{0,t_{te}} + 2 \sum_{t=1}^{t_{te}-1} m_t d_{t,t_{te}}}{m_0 + (t_{te}-1)m_1} + 4 \sqrt{\frac{1}{m_0 + (t_{te}-1)m_1}} \log \frac{2}{\delta}. \quad (6)$$

Proofs are in §A.2. Theorems 3.1 & 3.2 point out two sources of generalization error: (i) **distribution shift** in terms of $d_{t,t_{te}}$ and (ii) **learning error** due to the finite dataset size m_t . Regarding distribution shift, since larger time differences typically result in larger distribution shifts, we have $d_{0,t_{te}} > d_{1,t_{te}} > \dots > d_{t_{te}-1,t_{te}}$. Fine-tuning can exponentially shrink (via the $\gamma^{t_{te}-t-1}$ factor) the influence of distribution shift while retraining suffers from greater influence of distribution shift. This is consistent with our intuition since retraining treats old and new data equally while fine-tuning pays more attention to newer data. This suggests that we should use fine-tuning to mitigate the impact of distribution shift. Meanwhile, when t_{te} is large, fine-tuning's learning error $\frac{(1-\gamma)^2}{(1-\gamma^2)m_1}$ will be greater than retraining's $\frac{1}{m_0 + (t_{te}-1)m_1}$ because $m_1 \ll m_0$. This suggests that the performance of dynamically fine-tuned model will eventually degrade after a number of periods, which is consistent with our empirical observation (refer to Fig.10 in §B.3).

Therefore, to leverage the benefits of fine-tuning without sacrificing performance, it is advisable to fine-tune the model for certain periods T until performance degradation is observed, then retrain the model from scratch and resume the fine-tuning process.

3.2 Incremental Fine-Tuning Strategy

Building upon our theoretical analysis on (C1) **distribution shifts** and for the sake of (C2) **time-efficiency**, FADE fine-tunes the model parameters incrementally over time only with the new data \mathcal{D}_t collected at t . We optimize the following loss functions:

$$\mathcal{L}^{\mathcal{D}_t} := \mathcal{L}_{\text{rec}}^{\mathcal{D}_t} + \lambda \mathcal{L}_{\text{fair}}^{\mathcal{D}_t}, \quad (7)$$

where \mathcal{L}_{rec} is for improving the recommendation performance, $\mathcal{L}_{\text{fair}}$ is for regularizing the performance disparity between the disadvantaged and advantaged groups, and λ is the scaling parameter for controlling the trade-off between the recommendation performance and the fairness. In this paper, we use the classic Bayesian personalized ranking (BPR) loss [31] as \mathcal{L}_{rec} , i.e.,

$$\mathcal{L}_{\text{rec}}^{\mathcal{D}_t} := -\frac{1}{|\mathcal{E}_t|} \sum_{(u,i) \in \mathcal{E}_t} \frac{1}{|\mathcal{N}_{ui}|} \sum_{i' \in \mathcal{N}_{ui}} \log(\sigma(s_{ui} - s_{ui'})), \quad (8)$$

where $\sigma(\cdot)$ is the sigmoid function, and \mathcal{N}_{ui} is a set of sampled negative items for u . Note that this loss can be replaced with any differentiable recommendation loss that can be optimized by gradient descent. We will define $\mathcal{L}_{\text{fair}}$ in §3.4.

By jointly optimizing \mathcal{L}_{rec} and $\mathcal{L}_{\text{fair}}$ in an end-to-end fashion to fine-tune the model parameters for each time period, we can dynamically and efficiently reduce the performance disparity, which may otherwise worsen as the optimization continues, while simultaneously accurately preserving the user preferences over time.

3.3 Differentiable Hit

Most evaluation metrics for top- K recommendations, such as NDCG@ K , are not differentiable due to their reliance on the ranking/sorting operation of items. As discussed in §1, this (C3) **non-differentiability** presents a challenge when optimizing fairness measures, specifically performance disparity, using gradient descent algorithms. To overcome this challenge, several soft ranking losses have been proposed to directly optimize relaxed ranking metrics [4, 28, 29]. NeuralNDCG [28] is a recent work on differentiable approximation of ranking metrics. However, due to the use of the Sinkhorn algorithm, NeuralNDCG may lead to the gradient vanishing issue and also poses (C2) **time-inefficiency**. To address these limitations, we propose *Differentiable Hit*, a function that is not only effective but also more lightweight than existing methods, making it well-suited for dynamic recommendation.

First, let us define a standard *Hit* function. Suppose a score vector $\mathbf{s}_u = [s_{u1}, s_{u2}, \dots, s_{uN}]^\top$ for a user u represents the “unsorted” list of recommendation scores (i.e., $s_{ui} = \hat{Y}_t[u, i]$) of N candidate items in a set C_u (with $|C_u| = N$), a vector \mathbf{r}_u represents the “sorted” list of items ranked in the descending order by their scores in \mathbf{s}_u , and $\mathbf{r}_u[k]$ represents the k -th ranked item.

With the above definitions, we can define the *Hit* function, $\text{Hit}(C_u; k)$ for $k \in \{1, \dots, K\}$, which indicates whether the k -th ranked item $\mathbf{r}_u[k]$ is u 's ground-truth item, as follows:

$$\text{Hit}(C_u; k) := \begin{cases} 1 & \text{if } Y_t[u, \mathbf{r}_u[k]] = 1, \\ 0 & \text{if } Y_t[u, \mathbf{r}_u[k]] = 0. \end{cases} \quad (9)$$

Here, the *sorting operation* used to produce the \mathbf{r}_u , which can also be represented as a *permutation matrix*, renders the $\text{Hit}_u(k)$ non-differentiable. However, we can overcome this limitation by using the continuous relaxation for permutation matrices to approximate the deterministic sorting operation with a differentiable continuous sorting [12]. First, for the deterministic sorting, the permutation matrix $\mathbf{P}_u \in \mathbb{R}^{N \times N}$ is given by [12]:

$$\mathbf{P}_u[k, j] := \begin{cases} 1 & \text{if } j = \text{argmax}[(N+1-2k)s_u - \mathbf{A}_u \mathbf{1}], \\ 0 & \text{otherwise,} \end{cases} \quad (10)$$

where $\mathbf{1}$ is the column vector of all ones and \mathbf{A}_u is the absolute distance matrix of \mathbf{s}_u with $\mathbf{A}_u[k, j] = |s_{uk} - s_{uj}|$. For instance, if we set $k = \lfloor (N+1)/2 \rfloor$, then the non-zero entry in the k -th row, $\mathbf{P}_u[k, :]$, corresponds to the element with the minimum sum of absolute distances to the other elements, and this corresponds to the median element, as desired.

Then, the argmax operator is replaced by Gumbel-softmax [15] to obtain a continuous relaxation of the permutation matrix; the k -th row of the permutation matrix is relaxed as follows [12]:

$$\widehat{\mathbf{P}}_u[k, :] := \text{softmax}[(N+1-2k)s_u - \mathbf{A}_u \mathbf{1} / \tau], \quad (11)$$

where τ is the temperature parameter, and $\widehat{\mathbf{P}}_u$ approaches a permutation matrix (i.e., Eq. (10)) when $\tau \rightarrow 0^+$. Intuitively, each entry of $\widehat{\mathbf{P}}_u[k, :]$ indicates the probability that the corresponding item will be the k -th ranked item. Since $\widehat{\mathbf{P}}_u$ is continuous everywhere and differentiable almost everywhere w.r.t. the elements of \mathbf{s}_u , we can define a differentiable *Hit*, as we elaborate below.

Since the k -th row of the permutation matrix $\mathbf{P}_u[k, :]$ (i.e., Eq. (10)) is equal to the one-hot vector of the k -th ranked item, we can reformulate the *Hit* function (i.e., Eq. (9)) as follows:

$$\text{Hit}(C_u; k) = \mathbf{P}_u[k, :] \cdot \mathbf{Y}_t[u, :]^\top, \quad (12)$$

where $\mathbf{Y}_t[u, i] = 1$ if the item i is a ground-truth item, and 0 otherwise. Finally, by replacing $\mathbf{P}_u[k, :]$ (Eq. (10)) with $\widehat{\mathbf{P}}_u[k, :]$ (Eq. (11)), we define a *Differentiable Hit* (DH) as follows:

$$\text{DH}(C_u; k) := \widehat{\mathbf{P}}_u[k, :] \cdot \mathbf{Y}_t[u, :]^\top. \quad (13)$$

Using DH as a building block, we can differentially approximate various top- K recommendation metrics. For example,

$$\text{NDCG}@K \approx \frac{1}{|\mathcal{U}_t|} \sum_{u \in \mathcal{U}_t} \frac{1}{\max\text{DCG}(C_u)} \sum_{k=1}^K \frac{\text{DH}(C_u; k)}{\log_2(k+1)}, \quad (14)$$

where $\max\text{DCG}(C_u)$ is the maximum possible value of $\sum_{k=1}^K \frac{\text{DH}(C_u; k)}{\log_2(k+1)}$, computed by decreasingly ordering $i \in C_u$ by $\mathbf{Y}_t[u, i]$.

3.4 Fairness Loss

We design our fairness loss for reducing performance disparity between the advantaged ($a = 0$) and disadvantaged ($a = 1$) user groups. For the sake of training efficiency, we compose each candidate set with only 1 positive item and several negative items and use differentiable *Hit@1* in our fairness loss. Formally, for each $(u, i) \in \mathcal{E}_t$, we sample μ negative items \mathcal{N}'_{ui} , compose a candidate set $C_{ui} := \{i\} \cup \mathcal{N}'_{ui}$ and use $\text{DH}(C_{ui}; 1)$ as a surrogate of the measure of recommendation quality for a user. While this differentiable *Hit@1* used for training encourages the top-1 recommendation, it could also potentially benefit *Hit@K*-based metrics. We will empirically demonstrate that these settings consistently yield effective

Algorithm 1 Fine-tuning procedure at time period t

```

1: Input: Model parameters  $\mathcal{W}_{t-1}$ , scaling parameter  $\lambda$ , temperature parameter  $\tau$ , the number of negative items  $n$  for  $\mathcal{L}_{\text{rec}}$  and  $\mu$  for  $\mathcal{L}_{\text{fair}}$ , sensitive attribute  $a$ , incoming dataset  $\mathcal{D}_t = \{\mathcal{U}_t, \mathcal{I}_t, \mathcal{E}_t, \mathcal{Y}_t\}$ 
2: Output: Updated model parameters  $\mathcal{W}_t$ 
3:  $\mathcal{W}_t \leftarrow \mathcal{W}_{t-1}$ ;
4: for epoch do
5:   for mini-batch  $\mathcal{B}$  obtained from  $\mathcal{E}_t$  do
6:     for user-item interaction  $(u, i) \in \mathcal{B}$  do
7:       Sample  $n$  negative items as  $\mathcal{N}_{ui}$ ;
8:       Sample  $\mu$  negative items as  $\mathcal{N}'_{ui}$ ;  $C_{ui} \leftarrow \{i\} \cup \mathcal{N}'_{ui}$ ;
9:     end for
10:     $\mathcal{L}_{\text{rec}} \leftarrow -\frac{1}{|\mathcal{B}|} \sum_{(u,i) \in \mathcal{B}} \frac{1}{|\mathcal{N}_{ui}|} \sum_{i' \in \mathcal{N}_{ui}} \log(\sigma(s_{ui} - s_{ui'}))$ ;
11:     $\text{DPD} \leftarrow \frac{\sum_{(u,i) \in \{\mathcal{B}|a=0\}} \text{DH}(C_{ui}; 1)}{|\{\mathcal{B}|a=0\}|} - \frac{\sum_{(u,i) \in \{\mathcal{B}|a=1\}} \text{DH}(C_{ui}; 1)}{|\{\mathcal{B}|a=1\}|}$ ;
12:     $\mathcal{L}_{\text{fair}} \leftarrow -\log(\sigma(-\text{DPD}))$ ;
13:    Update  $\mathcal{W}_t$  based on  $\mathcal{L}_{\text{rec}} + \lambda \mathcal{L}_{\text{fair}}$  via gradient descent;
14:  end for
15: end for

```

results across various recommendation metrics that rely on the Hit function. Based on DH, we define the differentiable performance disparity (DPD) as follows:

$$\text{DPD}^{\mathcal{D}_t} := \frac{\sum_{(u,i) \in \{\mathcal{E}_t|a=0\}} \text{DH}(C_{ui}; 1)}{|\{\mathcal{E}_t|a=0\}|} - \frac{\sum_{(u,i) \in \{\mathcal{E}_t|a=1\}} \text{DH}(C_{ui}; 1)}{|\{\mathcal{E}_t|a=1\}|}, \quad (15)$$

which is an approximation of PD_t in Eq. (1) on the sampled item set. Then, a naïve fairness loss function is to minimize $|\text{DPD}|$:

$$\mathcal{L}_{\text{fair-abs}}^{\mathcal{D}_t} := -\log(\sigma(-|\text{DPD}^{\mathcal{D}_t}|)), \quad (16)$$

where $\sigma(\cdot)$ is the sigmoid function. However, the non-smoothness of $\mathcal{L}_{\text{fair-abs}}$ will cause instability in training, as shown in our experiment (Fig. 2). To address this limitation, we leverage the property of the sigmoid function and surprisingly prove that removing the absolute value operation $|\cdot|$ can still ensure fairness adaptively. Formally, we propose the following fairness loss:

$$\mathcal{L}_{\text{fair}}^{\mathcal{D}_t} := -\log(\sigma(-\text{DPD}^{\mathcal{D}_t})). \quad (17)$$

Then, we have Proposition 3.3.

PROPOSITION 3.3. *Let $\widetilde{\mathcal{W}}_t := \mathcal{W}_t - \eta \nabla_{\mathcal{W}_t} (\mathcal{L}_{\text{rec}}^{\mathcal{D}_t} + \lambda \mathcal{L}_{\text{fair}}^{\mathcal{D}_t})$ denote a gradient descent step with learning rate $\eta > 0$. Suppose that \mathcal{L}_{rec} causes unfairness (i.e., $\langle \nabla_{\mathcal{W}_t} \mathcal{L}_{\text{rec}}^{\mathcal{D}_t}, \nabla_{\mathcal{W}_t} \text{DPD}^{\mathcal{D}_t} \rangle \leq 0$), and that the fairness loss has influence (i.e., $\nabla_{\mathcal{W}_t} \mathcal{L}_{\text{fair}}^{\mathcal{D}_t} \neq \mathbf{0}$). Then, there exists $\lambda \geq 0$ such that*

$$\text{sgn}(\text{DPD}^{\mathcal{D}_t}(\mathcal{W}_t)) \cdot \lim_{\eta \rightarrow +0} \frac{\text{DPD}^{\mathcal{D}_t}(\widetilde{\mathcal{W}}_t) - \text{DPD}^{\mathcal{D}_t}(\mathcal{W}_t)}{\eta} \leq 0. \quad (18)$$

In particular, if $\text{DPD}^{\mathcal{D}_t}(\mathcal{W}_t) \leq 0$, then $\text{DPD}^{\mathcal{D}_t}(\widetilde{\mathcal{W}}_t) \geq \text{DPD}^{\mathcal{D}_t}(\mathcal{W}_t)$ as $\eta \rightarrow +0$.

Proof is in §A.3. Intuitively, our $\mathcal{L}_{\text{fair}}$ aims to benefit the disadvantaged user group ($a = 1$) over the advantaged group ($a = 0$). Meanwhile, whenever $\text{DPD} < 0$, the influence of $\mathcal{L}_{\text{fair}}$ will be reduced adaptively, so the unfair \mathcal{L}_{rec} will push DPD back to zero.

3.5 Complexity Analysis

Our fairness loss only adds a constant amount of complexity to most existing recommendation models. Assuming we employ MF-BPR [31] as the base recommendation model with user/item embeddings of dimensionality d , the time complexity of minimizing $\mathcal{L}_{\text{rec}}^{\mathcal{D}_t}$ is $O(|\mathcal{E}_t|nd)$, where n represents the number of negative items.

Regarding our fairness loss, *for each user interaction*, computing the score vector \mathbf{s}_u has a time complexity of $O(\mu d)$, and computing DH incurs $O(\mu^2)$ time complexity due to computing $\widehat{\mathbf{P}}_u[k, :]$ (i.e., Eq. (11)), which involves computing $\mathbf{A}_u \in \mathbb{R}^{(\mu+1) \times (\mu+1)}$. As a result, the time complexity of minimizing $\mathcal{L}_{\text{fair}}^{\mathcal{D}_t}$ becomes $O(|\mathcal{E}_t|(\mu^2 + \mu d))$, which can be approximated as $O(|\mathcal{E}_t|\mu d)$ since $\mu \ll d$. Therefore, the time complexity of minimizing the recommendation loss, $\mathcal{L}_{\text{rec}}^{\mathcal{D}_t}$, and the fairness loss, $\mathcal{L}_{\text{fair}}^{\mathcal{D}_t}$, are comparable.

4 EXPERIMENTS

We design experiments to answer the key research questions (RQs):

- RQ1.** How does learning new data affect model overall behavior?
- RQ2.** How effective is the fairness loss and fine-tuning in FADE?
- RQ3.** Does FADE outperform its fairness-aware competitors?
- RQ4.** How time-efficient is FADE?
- RQ5.** How effective/efficient is the Differentiable Hit in FADE?
- RQ6.** How sensitive is FADE to its hyperparameters?

Note that additional results are in §B.1-B.5 of the Online Appendix.

4.1 Experimental Settings

4.1.1 Dataset. For experiments, we use two real-world recommendation datasets from different domains.

- **MovieLens³:** This dataset contains 836, 478 ratings on 3, 628 movies by 6, 039 users at different timestamps. The sensitive attribute a is determined by the gender of each user, with male users as $a = 0$ (adv.) and female users as $a = 1$ (disadv.). This classification is based on the observation that the dataset is male-dominated, consisting of 4, 330 male users with 627, 933 training instances and 1, 709 female users with 208, 545 training instances [22].
- **ModCloth⁴ [36]:** This e-commerce dataset contains 83, 147 ratings on 1, 014 items (i.e., women's clothing) by 37, 142 users at different timestamps. The sensitive attribute a is determined by the body shape of each user, with "Small" users as $a = 0$ (adv.) and "Large" users as $a = 1$ (disadv.). The dataset is dominated by "Small" users, comprising 28, 374 "Small" users with 66, 663 training instances and 8, 768 "Large" users with 16, 484 training instances.

Following previous works in recommender systems [16, 43], we binarize the 5-star ratings for both datasets. We set $\mathbf{Y}[u, i] = 1$ if user u gives item i a rating greater than 2, and $\mathbf{Y}[u, i] = 0$ otherwise.

To simulate dynamic settings defined in §2, we first sort the interactions in the dataset in chronological order and use 60%/70% of them as pre-training data, and 28%/21% as dynamically observed data for MovieLens/ModCloth. We then split the dynamically observed data into 7 periods, each containing an equal number of interactions. This process yields $\{\mathcal{D}_0, \mathcal{D}_1, \dots, \mathcal{D}_T\}$, where $T = 7$.

4.1.2 Compared methods. We use two base system including Matrix Factorization (MF) and Neural Collaborative Filtering (NCF),

³<https://grouplens.org/datasets/movielens/1m/>

⁴<https://github.com/MengtingWan/marketBias>

both with the Bayesian Personalized Ranking (BPR) loss [31]. In this setup, we aim to validate the effectiveness of our *fine-tuning strategy* and the *fairness loss* used in FADE in ensuring high recommendation quality and user-side fairness over time. To establish a benchmark, we compare FADE with the following six combinations:

- PRETRAIN/PRETRAIN-FAIR: The static model pre-trained on \mathcal{D}_0 w/o and w/ the fairness loss, respectively.
- RETRAIN/RETRAIN-FAIR: Fully retraining the model using the accumulated historical data \mathcal{D}_t at each time period t , w/o and w/ the fairness loss, respectively.
- FINETUNE/FADE-ABS: Fine-tuning the model based on the current \mathcal{D}_t at each t , w/o the fairness loss and w/ the (naïve) fairness loss $\mathcal{L}_{\text{fair-abs}}$ that uses |DPD| (Eq. (16)), respectively.

In addition, we also compare FADE with the other fairness-aware competitors. To ensure a fair comparison, we implemented these methods with a fine-tuning strategy, even though they were originally not based on fine-tuning. The competitors we consider are:

- ADVER [21]: This method is based on adversarial learning technique. It is originally designed to filter out sensitive attributes from user embeddings, but its primary focus is not on reducing the performance disparity among different user groups.
- Re-rank [20]: This method is a fairness-constrained re-ranking approach. At each time period, a fine-tuned base model generates recommendation lists, which are used as the basis for generating new fair recommendation lists using this method.

4.1.3 Evaluation tasks. To evaluate the recommendation performance and PD, we design two types of recommendation tasks:

- Task-Remain (Task-R): Given the model trained up until time period t , the model is tested by recommending items for the remaining time periods with the test set $\mathcal{D}_t^{\text{test}} = \mathcal{D}_{t+1} \cup \dots \cup \mathcal{D}_T$.
- Task-Next (Task-N): Given the model trained up until time period t , the model is tested by recommending items for the right-next time period with the test set $\mathcal{D}_t^{\text{test}} = \mathcal{D}_{t+1}$.

Note that for both tasks, the data at the last time period, \mathcal{D}_T , is only used for testing and not for training purposes. Due to space issue, we put the full results for Task-N in §B.3 of the Online Appendix.

We use NDCG@20 and F1@20 to evaluate the top-20 recommendation quality. We adopt a similar approach as previous studies [17, 20], where we randomly sample 100 items that the user has not interacted with as negative samples. These negative samples, along with the ground-truth items, are used for evaluation.

4.1.4 Implementation details. For all compared methods, we set n (the number of negative samples for BPR loss) to 4, the learning rate to 0.001, and L2 regularization to 0.0001. We use the Adam optimization algorithm [18] to update model parameters.

For FADE and RETRAIN-FAIR based on both MF and NCF, we set $\tau = 3$, $\mu = 4$, and the number of dynamic update epochs to 10, which consistently show excellent trade-off between performance and disparity across all metrics and datasets. The λ is selected within range [0, 4] for PRETRAIN-FAIR, RETRAIN-FAIR, FADE-ABS, and FADE in all cases. We use a random seed for better reproducibility. For the implementation details of RERANK [20]/ADVER [21], refer to §B.1

4.2 The Effect of Learning from New Data

For RQ1 and RQ2, we compare the recommendation performance and performance disparity, both averaged across each dynamic update data, of the five methods (PRETRAIN, RETRAIN, FINETUNE, PRETRAIN-FAIR, RETRAIN-FAIR) with FADE. Fig. 2 shows the results w.r.t. different metrics, base recommender, and datasets.

First, compared to PRETRAIN, RETRAIN and FINETUNE yield an average increase of 9.01% and 4.61%, respectively, in recommendation performance in *all* cases, indicating that the new data is indeed useful for improving recommendation performance of the models over time. For PRETRAIN-FAIR, RETRAIN-FAIR, and FADE, the similar trend is observed: an average increase of 4.66% and 4.09%, respectively. However, in some cases on ModCloth, FADE performs worse than PRETRAIN-FAIR due to the initial high disparity of PRETRAIN-FAIR.

Regarding performance disparity, the PDs of RETRAIN tend to exceed those of PRETRAIN, and those of FINETUNE tend to fall below but still remain significant. This highlights the need to incorporate fairness considerations when integrating new data.

4.3 Ablation Study of FADE

4.3.1 With and without fairness loss. To answer RQ2, we continue comparing FADE with aforementioned five methods. First, regarding disparity, Fig. 2 shows that RETRAIN-FAIR and FADE yield significantly lower PDs compared to RETRAIN and FINETUNE, in *all* cases, with an average reduction of 47.60% and 48.91%, respectively. The results indicate that our fairness loss indeed helps reduce the performance disparity at each time period.

Furthermore, we examine how disparities change over time with FADE and the three methods, RETRAIN, RETRAIN-FAIR, FINETUNE, as shown in Fig. 3. We can see that without the fairness loss (RETRAIN/FINETUNE), the PDs tend to persist relatively high over time in all cases. However, when augmented with the fairness loss (RETRAIN-FAIR/FADE), the PDs tend to remain stably low.

Besides significant reduction of PDs, FADE has merely marginal sacrifice (2.44% on average) in recommendation performance compared to FINETUNE, and similar results are observed for RETRAIN and RETRAIN-FAIR, with an average decrease of 0.495%. This relatively slight decrease in recommendation performance is because FADE improves the performance of the disadvantaged group while reducing the performance of the advantaged group, in *all* cases, with an average increase of 2.06% and decrease of 3.37%, respectively.

4.3.2 Fine-tuning v.s. Retraining. Fig. 2 shows that FINETUNE consistently outperform RETRAIN w.r.t. both PD (an average decrease of 14.79%) and recommendation performance (an average increase of 1.38%) in all cases. FADE outperform RETRAIN-FAIR w.r.t. PD (an average decrease of 16.47%) while only slightly compromising recommendation performance (an average decrease of 0.61%). These results are consistent with our theoretical findings in §3.1, indicating that retraining is more affected by distribution shifts, while fine-tuning can exponentially shrink this impact. The lack of a clear advantage for fine-tuned models in recommendation performance is due to their eventual degradation after multiple periods, which is shown, for example, in the results for Movielenz in Fig.8 in §B.3.

4.4 Comparison with Fairness Competitors

To answer RQ3, we further compare FADE with the two fairness-aware competitors, ADVER and RERANK, in Fig. 2. Note that all of

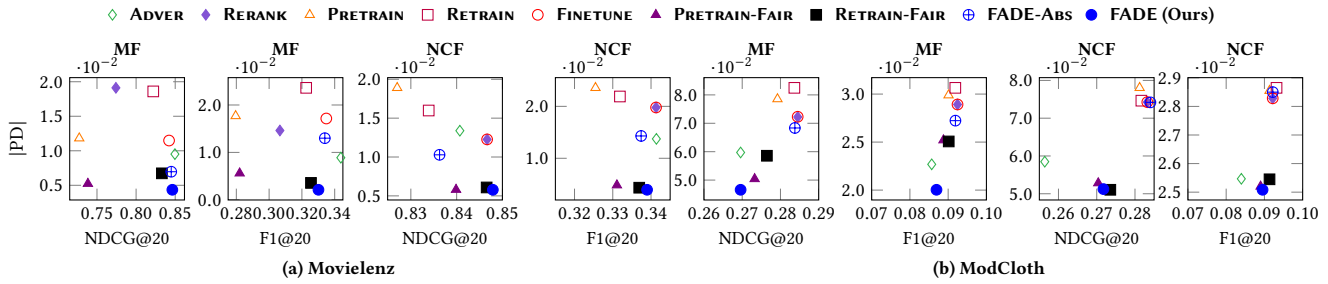


Figure 2: The trade-off between recommendation performance (NDCG@20 & F1@20) and absolute performance disparity |PD| of eight compared methods and FADE in Task-R. Employing our fairness loss leads to a substantial reduction in |PD| across all cases, with a modest impact on overall performance. Note that the optimal point should be situated in the bottom-right corner.

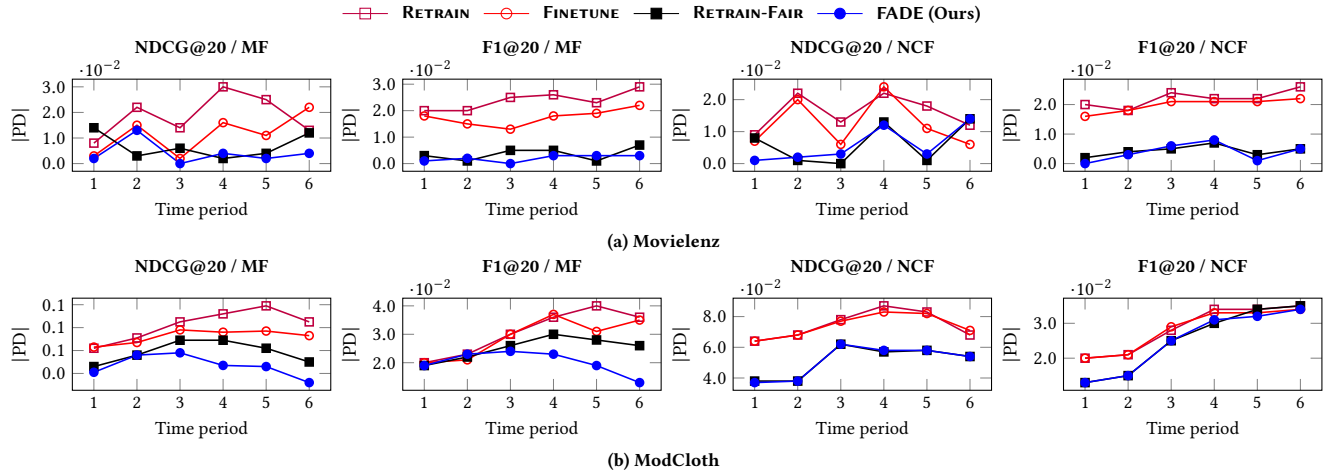


Figure 3: The trend of the absolute performance disparity (|PD|) in Task-R. Without the fairness loss, the |PD| is relatively high and often increase, while with the fairness loss, particularly in FADE, the |PD| tends to remain relatively low.

those methods are implemented based on fine-tuning strategy for fair comparison. First, FADE consistently achieves smaller PDs, averaging 36.53%, and it offers comparable recommendation performance on average 1.49% better than ADVER. This is because ADVER is not designed to reduce the performance gap between user groups; instead, its focus is on removing information related to sensitive attributes from user representations.

RETRANK and FINETUNE yield similar results in many cases, meaning that its re-ranking algorithm struggle to effectively re-rank the given recommendation lists. This is because the given base recommendation lists are already too unfair. For example, for disadvantaged users, the predicted scores may not accurately reflect the user’s true interests, resulting in very low predicted scores for the ground-truth items in the list. This issue is exacerbated when the given recommendation lists are short, which is a common in practice. This observation agrees with our intuition that dynamic adaptation is necessary rather than using post-processing.

4.5 Time-efficiency Comparison

To answer RQ4, we compare running time of FADE with the full-retraining based methods and the other fairness-aware techniques. The results are in Table 2 and each entry is the average running time of a model across the dynamic update data at each time period.

We have several observations based on the running time, averaged over base models and datasets. Firstly, FINETUNE/FADE achieve

Table 2: Efficiency comparison on the running time (seconds).

Data	Models	Full-retrain-based		Fine-tune-based			
		RETRAIN	RETRAIN-FAIR	ADVER	RERANK	FINETUNE	FADE
Movie.	MF	1373.17	1401.18	55.16	132.46	2.57	4.08
	NCF	1381.59	1488.5	61.66	420.54	5.07	5.93
	MF	154.22	163.12	4.01	250.75	0.79	0.93
Mod.	NCF	188.58	242.29	4.01	344.51	1.15	1.26
	Average	774.39	823.77	31.21	287.06	2.40	3.05

approximately 323/270 times faster running time compared to RETRAIN/RETRAIN-FAIR, indicating that the fine-tuning strategy employed in FADE enables the models to achieve high time efficiency, making them ideal for dynamic settings. Secondly, RETRAIN-FAIR/FADE exhibit approximately 1.06/1.27 times slower running time in comparison to RETRAIN/FINETUNE. This suggests that the additional computational cost introduced by our fairness loss is not significant. Lastly, FADE demonstrates a time efficiency around 10.23 times and 94.11 times faster than ADVER and RERANK, respectively, highlighting the lightweight design of our fairness loss compared to the existing fairness-aware losses.

4.6 Comparison with Soft Ranking Metrics

Due to the space limit, the results for RQ5 are deferred to §B.4. In essence, they show that FADE outperforms or matches the variant of FADE adapting NeuralNDCG in both recommendation performance and disparity, while being approximately four times faster.

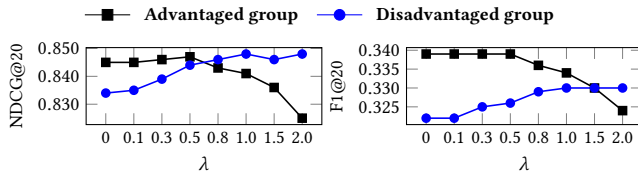


Figure 4: The effect of the scaling parameter λ on the performance of the advantaged and disadvantaged groups.

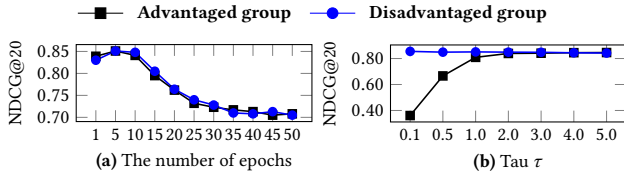


Figure 5: Effect of hyperparameters.

4.7 Hyperparameter Analysis

For RQ6, we investigate the sensitivity of FADE to four hyperparameters: (1) the scaling parameter λ , (2) the number of epochs of dynamic updates, (3) the temperature parameter τ , and (4) the number of negative items μ . Due to the space limit, we only show the results of FADE based on MF on Movielenz for λ , the number of epochs, and τ in Figs. 4 & 5. Please refer to §B.5 for the full results. They illustrate the performance of the advantaged and disadvantaged user groups for different values of these hyperparameters.

4.7.1 Effect of scaling parameter λ for the fairness Loss. Fig. 4 shows that the performance of the advantaged group tend to decrease while that of the disadvantaged group tend to increase as λ increases. In other words, the performance disparity between the two user groups steadily reduces until λ reaches an optimal value, which varies depending on the specific metric used. The results indicate that λ effectively controls the trade-off between recommendation performance and performance disparity.

4.7.2 Effect of the number of epochs of dynamic updates. Fig. 5-(a) shows that the performance of both user groups increases as the number of epochs of dynamic fine-tuning increases until reaching a peak around epoch 5 or 10. Subsequently, the performance gradually declines with further increases in the number of epochs. We suspect that setting the number of epochs too low may result in the model not learning enough from the current data. Conversely, when the number of epochs is set too high, the model potentially loses the knowledge acquired from historical data. We argue that this phenomenon is well-suited for the dynamic environment, as setting a low value for the number of epochs results in high efficiency.

4.7.3 Effect of temperature parameter τ in the relaxed permutation matrix. Higher values of τ result in smoother rows in the relaxed permutation matrix, $\hat{\mathbf{P}}_u[i, :]$. Fig 5-(b) shows that the performance of both user groups increases until $\tau = 2$, and then stabilizes. These findings indicate that FADE is not highly sensitive to τ , consistently delivering excellent performance for both user groups as long as τ is not too small. When τ is set too low, the Gumbel-softmax distribution becomes sharp, resulting in a nearly deterministic decision-making process for the model, i.e., $\hat{\mathbf{P}}_u[i, :]$ will be close to the one-hot vector of the i -th ranked item. As a result, the entry corresponding to the positive item in that vector is likely to

have an extremely small value, from the initial phase of training, potentially hindering the the fairness regularization.

5 RELATED WORK

Dynamic recommender systems. Instead of fully retraining with the entire dataset when new data is collected, which can be time-inefficient, we can fine-tune the model parameters using only the new data, which is referred to as dynamic/online recommender systems in the literature. To effectively learn from relatively sparse new data, several methods have been proposed based on reweighting either (1) the impact of each user-item interaction [13, 32] or (2) that of each model parameter [9, 23, 42]; [17] utilizes both approaches. One unique advantage of the fairness loss in FADE is that it can be easily applied to any existing dynamic recommender systems optimized using gradient-based algorithms.

Fair recommender systems in dynamic scenarios. Various fairness demands exist in recommender systems, including user-side [35], item-side [6], and two-sided fairness [41], as well as fairness on unipartite networks [1]. User-side fairness ensures fair recommendation quality for different users, while item-side fairness concentrates on equal exposure opportunities for items. Two-sided fairness seeks to balance these two aspects. While the literature [11, 26, 44] has addressed item-side fairness in dynamic recommendations, such as the work by [44] that scales predicted ratings by item popularity with higher strength over time, user-side fairness in dynamic settings remains unexplored, to our knowledge.

As described in Section 1, existing user-side fairness-aware re-ranking methods [10, 20] face the difficulties in dynamic settings. These methods tend to be time-inefficient, involving optimization problem akin to 0-1 integer programming problem. Furthermore, their non-differentiable fairness constraint, separating fairness optimization from that of recommendation quality, precludes model parameters from being regularized by fairness constraints. This hinders adaptation to distribution shifts in dynamic settings.

Another line of research into user-side fairness [2, 38, 39] employs adversarial functions to generate fair user representations independent of sensitive user attributes. However, these formulations do not explicitly address the reduction of performance disparity.

6 CONCLUSION

In this paper, we study the problem of user-side fairness in the dynamic recommendation scenario. We point out three key challenges in this problem: (1) distribution shifts, (2) frequent model updates, and (3) non-differentiability of ranking metrics. To address these challenges, we begin with theoretical analyses on fine-tuning v.s. retraining, showing that the best practice is incremental fine-tuning with restart. Guided by these insights, we propose **FAir Dynamic rEcommender (FADE)**, an end-to-end fine-tuning framework that dynamically ensures user-side fairness over time. It incorporates our fairness loss equipped with our lightweight Differentiable Hit, which enhances efficiency over the recent NeuralNDCG method. Through extensive experiments, we verify that FADE effectively and efficiently alleviates the performance disparity without significantly sacrificing recommendation performance.

ACKNOWLEDGMENT

This work is partially supported by NSF (1947135, 2134079, 1939725), DHS (17STQAC00001-07-00), and NIFA (2020-67021-32799).

REFERENCES

- [1] Nil-Jana Akpınar, Cyrus DiCiccio, Preetam Nandy, and Kinjal Basu. 2022. Long-term Dynamics of Fairness Intervention in Connection Recommender Systems. In *Proceedings of the 2022 AAAI/ACM Conference on AI, Ethics, and Society*. 22–35.
- [2] Ghazaleh Beigi, Ahmadreza Mosallanezhad, Ruocheng Guo, Hamidreza Alvari, Alexander Nou, and Huan Liu. 2020. Privacy-aware recommendation with private-attribute protection using adversarial learning. In *Proceedings of the 13th International Conference on Web Search and Data Mining*. 34–42.
- [3] Shai Ben-David, John Blitzer, Koby Crammer, Alex Kulesza, Fernando Pereira, and Jennifer Wortman Vaughan. 2010. A theory of learning from different domains. *Machine Learning* 79 (2010), 151–175.
- [4] Zhe Cao, Tao Qin, Tie-Yan Liu, Ming-Feng Tsai, and Hang Li. 2007. Learning to rank: from pairwise approach to listwise approach. In *Proceedings of the 24th international conference on Machine learning*. 129–136.
- [5] Jiawei Chen, Hande Dong, Xiang Wang, Fuli Feng, Meng Wang, and Xiangnan He. 2020. Bias and debias in recommender system: A survey and future directions. *ACM Transactions on Information Systems* (2020).
- [6] Xiao Chen, Wenqi Fan, Jingfan Chen, Haochen Liu, Zitao Liu, Zhaoxiang Zhang, and Qing Li. 2023. Fairly adaptive negative sampling for recommendations. In *Proceedings of the ACM Web Conference 2023*. 3723–3733.
- [7] Virginie Do, Sam Corbett-Davies, Jamal Atif, and Nicolas Usunier. 2021. Two-sided fairness in rankings via Lorenz dominance. *Advances in Neural Information Processing Systems* 34 (2021), 8596–8608.
- [8] Yushun Dong, Jian Kang, Hanghang Tong, and Jundong Li. 2021. Individual fairness for graph neural networks: A ranking based approach. In *Proceedings of the 27th ACM SIGKDD Conference on Knowledge Discovery & Data Mining*. 300–310.
- [9] Zhengxiao Du, Xiaowei Wang, Hongxia Yang, Jingren Zhou, and Jie Tang. 2019. Sequential scenario-specific meta learner for online recommendation. In *Proceedings of the 25th ACM SIGKDD International Conference on Knowledge Discovery & Data Mining*. 2895–2904.
- [10] Zuohui Fu, Yikun Xian, Ruoyuan Gao, Jieyu Zhao, Qiaoying Huang, Yingqiang Ge, Shuyuan Xu, Shijie Geng, Chirag Shah, Yongfeng Zhang, et al. 2020. Fairness-aware explainable recommendation over knowledge graphs. In *Proceedings of the 43rd International ACM SIGIR Conference on Research and Development in Information Retrieval*. 69–78.
- [11] Yingqiang Ge, Shuchang Liu, Ruoyuan Gao, Yikun Xian, Yunqi Li, Xiangyu Zhao, Changhua Pei, Fei Sun, Junfeng Ge, Wenwu Ou, et al. 2021. Towards long-term fairness in recommendation. In *Proceedings of the 14th ACM international conference on web search and data mining*. 445–453.
- [12] Aditya Grover, Eric Wang, Aaron Zweig, and Stefano Ermon. 2019. Stochastic Optimization of Sorting Networks via Continuous Relaxations. In *Proceedings of the International Conference on Learning Representations*.
- [13] Xiangnan He, Hanwang Zhang, Min-Yen Kan, and Tat-Seng Chua. 2016. Fast matrix factorization for online recommendation with implicit feedback. In *Proceedings of the 39th International ACM SIGIR conference on Research and Development in Information Retrieval*. 549–558.
- [14] Rashidul Islam, Kamrun Naher Keya, Ziqian Zeng, Shimei Pan, and James Foulds. 2021. Debiasing career recommendations with neural fair collaborative filtering. In *Proceedings of the Web Conference 2021*. 3779–3790.
- [15] Eric Jang, Shixiang Gu, and Ben Poole. 2016. Categorical reparameterization with gumbel-softmax. *arXiv preprint arXiv:1611.01144* (2016).
- [16] Piyush Kansal, Nitish Kumar, Sangam Verma, Karamjit Singh, and Pranav Poudval. 2022. FLiB: Fair Link Prediction in Bipartite Network. In *Advances in Knowledge Discovery and Data Mining: 26th Pacific-Asia Conference, PAKDD 2022, Chengdu, China, May 16–19, 2022, Proceedings, Part II*. Springer, 485–498.
- [17] Minseok Kim, Hwanjun Song, Yooju Shin, Dongmin Park, Kijung Shin, and Jaegil Lee. 2022. Meta-Learning for Online Update of Recommender Systems. In *Proceedings of the AAAI Conference on Artificial Intelligence*, Vol. 36. 4065–4074.
- [18] Diederik P Kingma and Jimmy Ba. 2014. Adam: A method for stochastic optimization. *arXiv preprint arXiv:1412.6980* (2014).
- [19] Preethi Lahoti, Krishna P Gummadi, and Gerhard Weikum. 2019. ifair: Learning individually fair data representations for algorithmic decision making. In *2019 IEEE 35th international conference on data engineering (icde)*. IEEE, 1334–1345.
- [20] Yunqi Li, Hanxiong Chen, Zuohui Fu, Yingqiang Ge, and Yongfeng Zhang. 2021. User-oriented fairness in recommendation. In *Proceedings of the Web Conference 2021*. 624–632.
- [21] Yunqi Li, Hanxiong Chen, Shuyuan Xu, Yingqiang Ge, and Yongfeng Zhang. 2021. Towards personalized fairness based on causal notion. In *Proceedings of the 44th International ACM SIGIR Conference on Research and Development in Information Retrieval*. 1054–1063.
- [22] Yanying Li, Xiuling Wang, Yue Ning, and Hui Wang. 2022. Fairlp: Towards fair link prediction on social network graphs. In *Proceedings of the International AAAI Conference on Web and Social Media*, Vol. 16. 628–639.
- [23] Zhenguo Li, Fengwei Zhou, Fei Chen, and Hang Li. 2017. Meta-sgd: Learning to learn quickly for few-shot learning. *arXiv preprint arXiv:1707.09835* (2017).
- [24] Yishay Mansour, Mehryar Mohri, and Afshin Rostamizadeh. 2009. Domain adaptation: Learning bounds and algorithms. In *Proceedings of The 22nd Annual Conference on Learning Theory*.
- [25] Andreas Maurer and Massimiliano Pontil. 2021. Concentration inequalities under sub-Gaussian and sub-exponential conditions. In *Advances in Neural Information Processing Systems*, Vol. 34. 7588–7597.
- [26] Marco Morik, Ashudeep Singh, Jessica Hong, and Thorsten Joachims. 2020. Controlling fairness and bias in dynamic learning-to-rank. In *Proceedings of the 43rd international ACM SIGIR conference on research and development in information retrieval*. 429–438.
- [27] Allan Pinkus. 1999. Approximation theory of the MLP model in neural networks. *Acta Numerica* 8 (1999), 143–195.
- [28] Przemyslaw Pobrotyn and Radosław Białobrzeski. 2021. Neuralndcg: Direct optimisation of a ranking metric via differentiable relaxation of sorting. *arXiv preprint arXiv:2102.07831* (2021).
- [29] Tao Qin, Tie-Yan Liu, and Hang Li. 2010. A general approximation framework for direct optimization of information retrieval measures. *Information Retrieval* 13 (2010), 375–397.
- [30] Aravind Rajeswaran, Chelsea Finn, Sham M Kakade, and Sergey Levine. 2019. Meta-learning with implicit gradients. In *Advances in Neural Information Processing Systems*, Vol. 32.
- [31] Steffen Rendle, Christoph Freudenthaler, Zeno Gantner, and Lars Schmidt-Thieme. 2012. BPR: Bayesian personalized ranking from implicit feedback. *arXiv preprint arXiv:1205.2618* (2012).
- [32] Jun Shu, Qi Xie, Lixuan Yi, Qian Zhao, Sanping Zhou, Zongben Xu, and Deyu Meng. 2019. Meta-weight-net: Learning an explicit mapping for sample weighting. *Advances in neural information processing systems* 32 (2019).
- [33] Harald Steck. 2011. Item popularity and recommendation accuracy. In *Proceedings of the fifth ACM conference on Recommender systems*. 125–132.
- [34] Harald Steck. 2019. Collaborative filtering via high-dimensional regression. *arXiv preprint arXiv:1904.13033* (2019).
- [35] Jiakai Tang, Shiqi Shen, Zhipeng Wang, Zhi Gong, Jingsen Zhang, and Xu Chen. 2023. When Fairness meets Bias: a Biased Framework for Fairness aware Top-N Recommendation. In *Proceedings of the 17th ACM Conference on Recommender Systems*. 200–210.
- [36] Mengting Wan, Jianmo Ni, Rishabh Misra, and Julian McAuley. 2020. Addressing marketing bias in product recommendations. In *Proceedings of the 13th international conference on web search and data mining*. 618–626.
- [37] Yifan Wang, Weizhi Ma, Min Zhang, Yiqun Liu, and Shaoping Ma. 2023. A survey on the fairness of recommender systems. *ACM Transactions on Information Systems* 41, 3 (2023), 1–43.
- [38] Chuhan Wu, Fangzhao Wu, Xiting Wang, Yongfeng Huang, and Xing Xie. 2021. Fairness-aware news recommendation with decomposed adversarial learning. In *Proceedings of the AAAI Conference on Artificial Intelligence*, Vol. 35. 4462–4469.
- [39] Le Wu, Lei Chen, Pengyang Shao, Richang Hong, Xiting Wang, and Meng Wang. 2021. Learning fair representations for recommendation: A graph-based perspective. In *Proceedings of the Web Conference 2021*. 2198–2208.
- [40] Shiwen Wu, Fei Sun, Wentao Zhang, Xu Xie, and Bin Cui. 2022. Graph neural networks in recommender systems: a survey. *Comput. Surveys* 55, 5 (2022), 1–37.
- [41] Yao Wu, Jian Cao, Guandong Xu, and Yudong Tan. 2021. TFROM: A two-sided fairness-aware recommendation model for both customers and providers. In *Proceedings of the 44th International ACM SIGIR Conference on Research and Development in Information Retrieval*. 1013–1022.
- [42] Yang Zhang, Fuli Feng, Chenxu Wang, Xiangnan He, Meng Wang, Yan Li, and Yongdong Zhang. 2020. How to retrain recommender system? A sequential meta-learning method. In *Proceedings of the 43rd International ACM SIGIR Conference on Research and Development in Information Retrieval*. 1479–1488.
- [43] Yu Zheng, Chen Gao, Xiang Li, Xiangnan He, Yong Li, and Depeng Jin. 2021. Disentangling user interest and conformity for recommendation with causal embedding. In *Proceedings of the Web Conference 2021*. 2980–2991.
- [44] Ziwei Zhu, Yun He, Xing Zhao, and James Caverlee. 2021. Popularity bias in dynamic recommendation. In *Proceedings of the 27th ACM SIGKDD Conference on Knowledge Discovery & Data Mining*. 2439–2449.
- [45] Ziwei Zhu, Yun He, Xing Zhao, Yin Zhang, Jianling Wang, and James Caverlee. 2021. Popularity-opportunity bias in collaborative filtering. In *Proceedings of the 14th ACM International Conference on Web Search and Data Mining*. 85–93.
- [46] Lixin Zou, Long Xia, Zhuoye Ding, Jiaying Song, Weidong Liu, and Dawei Yin. 2019. Reinforcement learning to optimize long-term user engagement in recommender systems. In *Proceedings of the 25th ACM SIGKDD International Conference on Knowledge Discovery & Data Mining*. 2810–2818.

A THEORETICAL ANALYSES

A.1 Assumptions

In this subsection, we introduce our theoretical assumptions, which are quite mild and realistic.

To ensure that the dataset has a good coverage of the underlying distribution, a common assumption in literature is independence:

ASSUMPTION 1 (DATA INDEPENDENCE). *For every t , the data tuples in \mathcal{D}_t are mutually independent.*

Regarding the loss function, a well-behaved loss function should be able to be minimized. Common loss functions satisfy this property. This leads us to the following Assumption 2:

ASSUMPTION 2 (EXISTENCE OF INFIMA). *For every t , the infimum $\mathcal{L}_t^* := \inf_{\mathcal{W}} \mathcal{L}_t(\mathcal{W})$ exists.*

Note that we do not assume *realizability*, i.e., we do not assume that there exists \mathcal{W} that can achieve this infimum. Our Assumption 2 is realistic in machine learning. For example, neural networks can arbitrarily approximate any continuous function over any compact domain [27], but they may not be exactly equal that function.

Besides that, since data tuples are mutually independent, each data tuple in the dataset should not have dominant influence on the overall loss function, which means that the loss function should use the whole dataset. This leads us to the following Assumption 3:

ASSUMPTION 3 (NO DOMINANT INFLUENCE). *For every t , for each data tuple $z \in \mathcal{D}_t$, the loss $\mathcal{L}^{\mathcal{D}_t}(\mathcal{W})$ conditioned on $\mathcal{D}_t \setminus \{z\}$ is $\frac{\zeta^2}{m_t}$ -subgaussian. Without loss of generality, we can assume $\zeta = 1$ by rescaling \mathcal{L} .*

The subgaussian property is a common assumption in machine learning [25], and common loss functions satisfy our Assumption 3. Since there exist various definitions of the subgaussian property (yet equivalent up to constant factors), we clarify our definition as follows:

DEFINITION 1 (SUBGAUSSIAN PROPERTY). *For $\zeta > 0$, a real-valued random variable X is said to be ζ^2 -subgaussian if*

$$\mathbb{E}[e^{v(X - \mathbb{E}[X])}] \leq e^{\zeta^2 v^2 / 2}, \quad \forall v \in \mathbb{R}. \quad (19)$$

The equality holds for univariate Gaussians with variance ζ^2 .

Finally, we state our assumption on fine-tuning and retraining. For each $t \geq 1$, let $\mathcal{W}_t^{\text{ft}}$ denote the model parameters fine-tuned till \mathcal{D}_t . To characterize the fact that the fine-tuned $\mathcal{W}_t^{\text{ft}}$ does not completely forget the previously learned knowledge in $\mathcal{W}_{t-1}^{\text{ft}}$, we assume that all time periods share the same parameter space and use the following classic Assumption 4 (adapted from [30]):

ASSUMPTION 4 (PROXIMAL FINE-TUNING). *There is $0 < \gamma < 1$ such that for each $t \geq 1$, the number of fine-tuning epochs is decided such that the fine-tuned $\mathcal{W}_t^{\text{ft}}$ is minimizing*

$$\ell_t(\mathcal{W}) := \mathcal{L}^{\mathcal{D}_t}(\mathcal{W}) + \gamma \ell_{t-1}(\mathcal{W}), \quad (20)$$

where $\ell_0(\mathcal{W}) := \mathcal{L}^{\mathcal{D}_0}(\mathcal{W})$ denotes the pretraining loss function.

For retraining, we assume that the influence of each time period t to the retraining loss is a proportional to the size m_t of \mathcal{D}_t :

ASSUMPTION 5 (RETRAINING LOSS).

$$\mathcal{L}_{t_{\text{te}}-1}^{\text{rt}}(\mathcal{W}) := \frac{\sum_{t=0}^{t_{\text{te}}-1} m_t \mathcal{L}^{\mathcal{D}_t}(\mathcal{W})}{\sum_{t=0}^{t_{\text{te}}-1} m_t}. \quad (21)$$

Although this is a simplification of the retraining loss in practice, it still captures the essential properties of retraining.

A.2 Proofs of Theorems 3.1 & 3.2

Our proofs of Theorems 3.1 & 3.2 rely on the following Lemma A.1.

LEMMA A.1. *For $\alpha \in \mathbb{R}_{\geq 0}^{t_{\text{te}}}$ with $\sum_{t=0}^{t_{\text{te}}-1} \alpha_t = 1$ and for $\epsilon > 0$, let $\mathcal{W}_{t_{\text{te}}-1}^{\alpha, \epsilon}$ denote some model parameters such that*

$$\sum_{t=0}^{t_{\text{te}}-1} \alpha_t \mathcal{L}_t(\mathcal{W}_{t_{\text{te}}-1}^{\alpha, \epsilon}) \leq \epsilon + \inf_{\mathcal{W}} \sum_{t=0}^{t_{\text{te}}-1} \alpha_t \mathcal{L}^{\mathcal{D}_t}(\mathcal{W}). \quad (22)$$

Then with probability at least $1 - \delta$,

$$\mathcal{L}_{t_{\text{te}}}(\mathcal{W}_{t_{\text{te}}-1}^{\alpha, \epsilon}) \leq \mathcal{L}_{t_{\text{te}}}^* + \epsilon + 2 \sum_{t=0}^{t_{\text{te}}-1} \alpha_t d_{t, t_{\text{te}}} + 4 \sqrt{\sum_{t=0}^{t_{\text{te}}-1} \frac{\alpha_t^2}{m_t} \log \frac{2}{\delta}}.$$

PROOF OF LEMMA A.1. Generalized from [3]. For $k \geq 1$, let

$$\mathcal{W}_t^k \in \mathcal{L}_t^{-1}\left(\left(-\infty, \mathcal{L}_t^* + \frac{1}{k}\right)\right), \quad (23)$$

$$\mathcal{W}_{t, t_{\text{te}}}^k \in (\mathcal{L}_t + \mathcal{L}_{t_{\text{te}}})^{-1}\left(\left(-\infty, \mathcal{L}_t^* + \mathcal{L}_{t_{\text{te}}}^* + d_{t, t_{\text{te}}}^{\text{comb}} + \frac{1}{k}\right)\right). \quad (24)$$

Then for any \mathcal{W} , by the triangle inequality,

$$\left|(\mathcal{L}_t(\mathcal{W}) - \mathcal{L}_t^*) - (\mathcal{L}_{t_{\text{te}}}(\mathcal{W}) - \mathcal{L}_{t_{\text{te}}}^*)\right| \quad (25)$$

$$= \left|\mathcal{L}_t(\mathcal{W}) - \mathcal{L}_t^*\right| - \left|\mathcal{L}_{t_{\text{te}}}(\mathcal{W}) - \mathcal{L}_{t_{\text{te}}}^*\right| \quad (26)$$

$$= \left|(\left|\mathcal{L}_t(\mathcal{W}) - \mathcal{L}_t(\mathcal{W}_{t, t_{\text{te}}}^k)\right| - \left|\mathcal{L}_t(\mathcal{W}) - \mathcal{L}_t(\mathcal{W}_{t, t_{\text{te}}}^k)\right|)\right| \quad (27)$$

$$+ \left|(\left|\mathcal{L}_t(\mathcal{W}) - \mathcal{L}_t^*\right| - \left|\mathcal{L}_t(\mathcal{W}) - \mathcal{L}_t(\mathcal{W}_{t, t_{\text{te}}}^k)\right|)\right|$$

$$- \left|(\left|\mathcal{L}_{t_{\text{te}}}(\mathcal{W}) - \mathcal{L}_{t_{\text{te}}}^*\right| - \left|\mathcal{L}_{t_{\text{te}}}(\mathcal{W}) - \mathcal{L}_{t_{\text{te}}}(\mathcal{W}_{t, t_{\text{te}}}^k)\right|)\right|$$

$$\leq \left|\mathcal{L}_t(\mathcal{W}) - \mathcal{L}_t(\mathcal{W}_{t, t_{\text{te}}}^k)\right| - \left|\mathcal{L}_{t_{\text{te}}}(\mathcal{W}) - \mathcal{L}_{t_{\text{te}}}(\mathcal{W}_{t, t_{\text{te}}}^k)\right|$$

$$+ \left|\mathcal{L}_t(\mathcal{W}) - \mathcal{L}_t^*\right| - \left|\mathcal{L}_t(\mathcal{W}) - \mathcal{L}_t(\mathcal{W}_{t, t_{\text{te}}}^k)\right| \quad (28)$$

$$+ \left|\mathcal{L}_{t_{\text{te}}}(\mathcal{W}) - \mathcal{L}_{t_{\text{te}}}^*\right| - \left|\mathcal{L}_{t_{\text{te}}}(\mathcal{W}) - \mathcal{L}_{t_{\text{te}}}(\mathcal{W}_{t, t_{\text{te}}}^k)\right|$$

$$\leq d_{t, t_{\text{te}}}^{\mathcal{H}\Delta\mathcal{H}} + \left|(\mathcal{L}_t(\mathcal{W}) - \mathcal{L}_t^*) - (\mathcal{L}_t(\mathcal{W}) - \mathcal{L}_t(\mathcal{W}_{t, t_{\text{te}}}^k))\right| \quad (29)$$

$$+ \left|(\mathcal{L}_{t_{\text{te}}}(\mathcal{W}) - \mathcal{L}_{t_{\text{te}}}^*) - (\mathcal{L}_{t_{\text{te}}}(\mathcal{W}) - \mathcal{L}_{t_{\text{te}}}(\mathcal{W}_{t, t_{\text{te}}}^k))\right| \quad (30)$$

$$= d_{t, t_{\text{te}}}^{\mathcal{H}\Delta\mathcal{H}} + \left|\mathcal{L}_t(\mathcal{W}_{t, t_{\text{te}}}^k) - \mathcal{L}_t^*\right| + \left|\mathcal{L}_{t_{\text{te}}}(\mathcal{W}_{t, t_{\text{te}}}^k) - \mathcal{L}_{t_{\text{te}}}^*\right| \quad (31)$$

$$= d_{t, t_{\text{te}}}^{\mathcal{H}\Delta\mathcal{H}} + \mathcal{L}_t(\mathcal{W}_{t, t_{\text{te}}}^k) - \mathcal{L}_t^* + \mathcal{L}_{t_{\text{te}}}(\mathcal{W}_{t, t_{\text{te}}}^k) - \mathcal{L}_{t_{\text{te}}}^* \quad (32)$$

$$\leq d_{t, t_{\text{te}}}^{\mathcal{H}\Delta\mathcal{H}} + d_{t, t_{\text{te}}}^{\text{comb}} + \frac{1}{k} \quad (33)$$

Thus,

$$\left| \sum_{t=0}^{t_{te}-1} \alpha_t (\mathcal{L}_t(\mathcal{W}) - \mathcal{L}_t^*) - (\mathcal{L}_{t_{te}}(\mathcal{W}) - \mathcal{L}_{t_{te}}^*) \right| \quad (34)$$

$$= \left| \sum_{t=0}^{t_{te}-1} \alpha_t (\mathcal{L}_t(\mathcal{W}) - \mathcal{L}_t^*) - \sum_{t=0}^{t_{te}-1} \alpha_t (\mathcal{L}_{t_{te}}(\mathcal{W}) - \mathcal{L}_{t_{te}}^*) \right| \quad (35)$$

$$= \left| \sum_{t=0}^{t_{te}-1} \alpha_t ((\mathcal{L}_t(\mathcal{W}) - \mathcal{L}_t^*) - (\mathcal{L}_{t_{te}}(\mathcal{W}) - \mathcal{L}_{t_{te}}^*)) \right| \quad (36)$$

$$\leq \sum_{t=0}^{t_{te}-1} \alpha_t |(\mathcal{L}_t(\mathcal{W}) - \mathcal{L}_t^*) - (\mathcal{L}_{t_{te}}(\mathcal{W}) - \mathcal{L}_{t_{te}}^*)| \quad (37)$$

$$\leq \sum_{t=0}^{t_{te}-1} \alpha_t \left(d_{t,t_{te}} + \frac{1}{k} \right) \quad (38)$$

$$= \sum_{t=0}^{t_{te}-1} \alpha_t d_{t,t_{te}} + \frac{1}{k}. \quad (39)$$

Besides that, by Theorem 3 in [25] and Assumption 3,

$$\mathbb{P} \left\{ \sum_{t=0}^{t_{te}-1} \alpha_t \mathcal{L}^{\mathcal{D}_t}(\mathcal{W}) \geq \sum_{t=0}^{t_{te}-1} \alpha_t \mathcal{L}_t(\mathcal{W}) + \epsilon \right\} \quad (40)$$

$$\leq \exp \left(- \frac{\epsilon^2}{4 \sum_{t=0}^{t_{te}-1} m_t (\alpha_t \frac{\zeta}{m_t})^2} \right) = \exp \left(- \frac{\epsilon^2}{4 \zeta^2 \sum_{t=0}^{t_{te}-1} \frac{\alpha_t^2}{m_t}} \right). \quad (41)$$

Then for $\zeta = 1$, with probability at least $1 - \delta/2$,

$$\sum_{t=0}^{t_{te}-1} \alpha_t \mathcal{L}^{\mathcal{D}_t}(\mathcal{W}) \leq \sum_{t=0}^{t_{te}-1} \alpha_t \mathcal{L}_t(\mathcal{W}) + 2 \sqrt{\sum_{t=0}^{t_{te}-1} \frac{\alpha_t^2}{m_t} \log \frac{2}{\delta}}. \quad (42)$$

Similarly, with probability at least $1 - \delta/2$,

$$\sum_{t=0}^{t_{te}-1} \alpha_t \mathcal{L}_t(\mathcal{W}) \leq \sum_{t=0}^{t_{te}-1} \alpha_t \mathcal{L}^{\mathcal{D}_t}(\mathcal{W}) + 2 \sqrt{\sum_{t=0}^{t_{te}-1} \frac{\alpha_t^2}{m_t} \log \frac{2}{\delta}}. \quad (43)$$

Together, with probability at least $1 - \delta$,

$$\mathcal{L}_{t_{te}}(\mathcal{W}^{\alpha, \epsilon}) \quad (44)$$

$$= \mathcal{L}_{t_{te}}^* + \mathcal{L}_{t_{te}}(\mathcal{W}_{t_{te}-1}^{\alpha, \epsilon}) - \mathcal{L}_{t_{te}}^* \quad (45)$$

$$\leq \mathcal{L}_{t_{te}}^* + \sum_{t=0}^{t_{te}-1} \alpha_t (\mathcal{L}_t(\mathcal{W}_{t_{te}-1}^{\alpha, \epsilon}) - \mathcal{L}_t^*) + \sum_{t=0}^{t_{te}-1} \alpha_t d_{t,t_{te}} + \frac{1}{k} \quad (46)$$

$$\leq \mathcal{L}_{t_{te}}^* + \sum_{t=0}^{t_{te}-1} \alpha_t (\mathcal{L}^{\mathcal{D}_t}(\mathcal{W}_{t_{te}-1}^{\alpha, \epsilon}) - \mathcal{L}_t^*) + \sum_{t=0}^{t_{te}-1} \alpha_t d_{t,t_{te}} + \frac{1}{k} + 2 \sqrt{\sum_{t=0}^{t_{te}-1} \frac{\alpha_t^2}{m_t} \log \frac{2}{\delta}} \quad (47)$$

$$\leq \mathcal{L}_{t_{te}}^* + \epsilon + \sum_{t=0}^{t_{te}-1} \alpha_t (\mathcal{L}^{\mathcal{D}_t}(\mathcal{W}_{t_{te}}^k) - \mathcal{L}_t^*) + \sum_{t=0}^{T-1} \alpha_t d_{t,t_{te}} + \frac{1}{k} + 2 \sqrt{\sum_{t=0}^{t_{te}-1} \frac{\alpha_t^2}{m_t} \log \frac{2}{\delta}} \quad (48)$$

$$\leq \mathcal{L}_{t_{te}}^* + \epsilon + \sum_{t=0}^{t_{te}-1} \alpha_t (\mathcal{L}_t(\mathcal{W}_{t_{te}}^k) - \mathcal{L}_t^*) + \sum_{t=0}^{t_{te}-1} \alpha_t d_{t,t_{te}} + \frac{1}{k} + 4 \sqrt{\sum_{t=0}^{t_{te}-1} \frac{\alpha_t^2}{m_t} \log \frac{2}{\delta}} \quad (49)$$

$$\leq \mathcal{L}_{t_{te}}^* + \epsilon + \mathcal{L}_{t_{te}}(\mathcal{W}_{t_{te}}^k) - \mathcal{L}_{t_{te}}^* + 2 \sum_{t=0}^{t_{te}-1} \alpha_t d_{t,t_{te}} + \frac{2}{k} + 4 \sqrt{\sum_{t=0}^{t_{te}-1} \frac{\alpha_t^2}{m_t} \log \frac{2}{\delta}} \quad (50)$$

$$\leq \mathcal{L}_{t_{te}}^* + \epsilon + 2 \sum_{t=0}^{t_{te}-1} \alpha_t d_{t,t_{te}} + \frac{3}{k} + 4 \sqrt{\sum_{t=0}^{t_{te}-1} \frac{\alpha_t^2}{m_t} \log \frac{2}{\delta}}. \quad (51)$$

It follows from the continuity of probability that

$$\mathbb{P} \left\{ \mathcal{L}_{t_{te}}(\mathcal{W}_{t_{te}-1}^{\alpha, \epsilon}) > \mathcal{L}_{t_{te}}^* + \epsilon + 2 \sum_{t=0}^{t_{te}-1} \alpha_t d_{t,t_{te}} + 4 \sqrt{\sum_{t=0}^{t_{te}-1} \frac{\alpha_t^2}{m_t} \log \frac{2}{\delta}} \right\} \quad (52)$$

$$= \mathbb{P} \left[\bigcup_{k=1}^{\infty} \left\{ \mathcal{L}_{t_{te}}(\mathcal{W}_{t_{te}-1}^{\alpha, \epsilon}) \geq \mathcal{L}_{t_{te}}^* + \epsilon + 2 \sum_{t=0}^{t_{te}-1} \alpha_t d_{t,t_{te}} + \frac{3}{k} + 4 \sqrt{\sum_{t=0}^{t_{te}-1} \frac{\alpha_t^2}{m_t} \log \frac{2}{\delta}} \right\} \right] \quad (53)$$

$$= \lim_{k \rightarrow \infty} \mathbb{P} \left\{ \mathcal{L}_{t_{te}}(\mathcal{W}_{t_{te}-1}^{\alpha, \epsilon}) \geq \mathcal{L}_{t_{te}}^* + \epsilon + 2 \sum_{t=0}^{t_{te}-1} \alpha_t d_{t,t_{te}} + \frac{3}{k} + 4 \sqrt{\sum_{t=0}^{t_{te}-1} \frac{\alpha_t^2}{m_t} \log \frac{2}{\delta}} \right\} \quad (54)$$

$$\leq \lim_{k \rightarrow \infty} \delta = \delta. \quad \square$$

COROLLARY A.2. Under the setup of Lemma A.1, let

$$L_{t_{te}}^{\alpha} := \inf_{\substack{\epsilon > 0 \\ \epsilon \in \mathbb{Q}}} L_{t_{te}}(\mathcal{W}_{t_{te}-1}^{\alpha, \epsilon}) \quad (55)$$

denote the best possible loss w.r.t. α . With probability at least $1 - \delta$,

$$L_{t_{te}}^{\alpha} \leq \mathcal{L}_{t_{te}}^* + 2 \sum_{t=0}^{t_{te}-1} \alpha_t d_{t,t_{te}} + 4 \sqrt{\sum_{t=0}^{t_{te}-1} \frac{\alpha_t^2}{m_t} \log \frac{2}{\delta}}. \quad (56)$$

PROOF OF COROLLARY A.2. By the continuity of probability,

$$\mathbb{P}\left\{\mathcal{L}_{t_{te}}^\alpha > \mathcal{L}_{t_{te}}^* + 2 \sum_{t=0}^{t_{te}-1} \alpha_t d_{t,T} + 4 \sqrt{\sum_{t=0}^{t_{te}-1} \frac{\alpha_t^2}{m_t} \log \frac{2}{\delta}}\right\} \quad (57)$$

$$= \mathbb{P}\left[\bigcup_{k=1}^{\infty} \left\{\mathcal{L}_{t_{te}}^\alpha \geq \mathcal{L}_{t_{te}}^* + \frac{1}{k} + 2 \sum_{t=0}^{t_{te}-1} \alpha_t d_{t,t_{te}} + 4 \sqrt{\sum_{t=0}^{t_{te}-1} \frac{\alpha_t^2}{m_t} \log \frac{2}{\delta}}\right\}\right] \quad (58)$$

$$= \lim_{k \rightarrow \infty} \mathbb{P}\left\{\mathcal{L}_{t_{te}}^\alpha \geq \mathcal{L}_{t_{te}}^* + \frac{1}{k} + 2 \sum_{t=0}^{t_{te}-1} \alpha_t d_{t,t_{te}} + 4 \sqrt{\sum_{t=0}^{t_{te}-1} \frac{\alpha_t^2}{m_t} \log \frac{2}{\delta}}\right\} \quad (59)$$

$$\leq \limsup_{k \rightarrow \infty} \mathbb{P}\left\{\mathcal{L}_{t_{te}}(\mathcal{W}_{t_{te}-1}^{\alpha, \frac{1}{k}}) \geq \mathcal{L}_{t_{te}}^* + \frac{1}{k} + 2 \sum_{t=0}^{t_{te}-1} \alpha_t d_{t,t_{te}} + 4 \sqrt{\sum_{t=0}^{t_{te}-1} \frac{\alpha_t^2}{m_t} \log \frac{2}{\delta}}\right\} \quad (60)$$

$$\leq \limsup_{k \rightarrow \infty} \delta = \delta. \quad \square$$

Now we give the proofs of Theorems 3.1 & 3.2.

PROOF OF THEOREM 3.1. By Assumption 4,

$$\ell_{t_{te}-1}(\mathcal{W}) = \mathcal{L}^{\mathcal{D}^{t_{te}-1}}(\mathcal{W}) + \gamma \ell_{t_{te}-2}(\mathcal{W}) = \sum_{t=0}^{t_{te}-1} \gamma^{t_{te}-t-1} \mathcal{L}^{\mathcal{D}^t}(\mathcal{W}). \quad (61)$$

Thus, normalizing the coefficients gives

$$\alpha_t^{\text{ft}} := \frac{(1-\gamma)\gamma^{t_{te}-t-1}}{1-\gamma^{t_{te}}}. \quad (62)$$

It follows from Corollary A.2 that

$$\mathcal{L}_{t_{te}}^{\text{ft}} = \mathcal{L}_{t_{te}}^{\alpha^{\text{ft}}} \quad (63)$$

$$\begin{aligned} &\leq \mathcal{L}_{t_{te}}^* + 2 \sum_{t=0}^{t_{te}-1} \alpha_t^{\text{ft}} d_{t,t_{te}} + 4 \sqrt{\sum_{t=0}^{t_{te}-1} \frac{(\alpha_t^{\text{ft}})^2}{m_t} \log \frac{2}{\delta}} \\ &= \mathcal{L}_{t_{te}}^* + \frac{(1-\gamma) \left(2 \sum_{t=0}^{t_{te}-1} \gamma^{t_{te}-t-1} d_{t,t_{te}} + 4 \sqrt{\left(\frac{\gamma^{2t_{te}-2}}{m_0} + \frac{1-\gamma^{2t_{te}-2}}{(1-\gamma^2)m_1} \right) \log \frac{2}{\delta}} \right)}{1-\gamma^{t_{te}}} \quad \square \end{aligned} \quad (64)$$

PROOF OF THEOREM 3.2. By Assumption 5, we have

$$\alpha_t^{\text{rt}} := \frac{m_t}{\sum_{t'=0}^{t_{te}-1} m_{t'}} = \frac{m_t}{m_0 + (t_{te}-1)m_1}. \quad (65)$$

It follows from Corollary A.2 that

$$\mathcal{L}_{t_{te}}^{\text{rt}} = \mathcal{L}_{t_{te}}^{\alpha^{\text{rt}}} \quad (66)$$

$$\begin{aligned} &\leq \mathcal{L}_{t_{te}}^* + 2 \sum_{t=0}^{t_{te}-1} \alpha_t^{\text{rt}} d_{t,t_{te}} + 4 \sqrt{\sum_{t=0}^{t_{te}-1} \frac{(\alpha_t^{\text{rt}})^2}{m_t} \log \frac{2}{\delta}} \\ &= \mathcal{L}_{t_{te}}^* + \frac{2m_0 d_{0,t_{te}} + 2 \sum_{t=1}^{t_{te}-1} m_1 d_{t,t_{te}}}{m_0 + (t_{te}-1)m_1} + 4 \sqrt{\frac{1}{m_0 + (t_{te}-1)m_1} \log \frac{2}{\delta}}. \quad \square \end{aligned} \quad (67)$$

A.3 Proof of Proposition 3.3

PROOF OF PROPOSITION 3.3. Note that

$$\nabla_{\mathcal{W}_t} \mathcal{L}_{\text{fair}}^{\mathcal{D}^t}(\mathcal{W}_t) = \nabla_{\mathcal{W}_t} (-\log(\sigma(-\text{DPD}^{\mathcal{D}^t}(\mathcal{W}_t)))) \quad (68)$$

$$= \sigma(\text{DPD}^{\mathcal{D}^t}(\mathcal{W}_t)) \nabla_{\mathcal{W}_t} \text{DPD}^{\mathcal{D}^t}(\mathcal{W}_t). \quad (69)$$

Since $\nabla_{\mathcal{W}_t} \mathcal{L}_{\text{fair}}^{\mathcal{D}^t}(\mathcal{W}_t) \neq \mathbf{0}$, then $\nabla_{\mathcal{W}_t} \text{DPD}^{\mathcal{D}^t}(\mathcal{W}_t) \neq \mathbf{0}$. Consider

$$\lambda := \frac{-2 \langle \nabla_{\mathcal{W}_t} \mathcal{L}_{\text{rec}}^{\mathcal{D}^t}(\mathcal{W}_t), \nabla_{\mathcal{W}_t} \text{DPD}^{\mathcal{D}^t}(\mathcal{W}_t) \rangle}{\|\nabla_{\mathcal{W}_t} \text{DPD}^{\mathcal{D}^t}(\mathcal{W}_t)\|^2} \geq 0. \quad (70)$$

By the chain rule,

$$\lim_{\eta \rightarrow +0} \frac{\text{DPD}^{\mathcal{D}^t}(\widetilde{\mathcal{W}}_t) - \text{DPD}^{\mathcal{D}^t}(\mathcal{W}_t)}{\eta} \quad (71)$$

$$= -\langle \nabla_{\mathcal{W}_t} \mathcal{L}_{\text{rec}}^{\mathcal{D}^t}(\mathcal{W}_t) + \lambda \nabla_{\mathcal{W}_t} \mathcal{L}_{\text{fair}}^{\mathcal{D}^t}(\mathcal{W}_t), \nabla_{\mathcal{W}_t} \text{DPD}^{\mathcal{D}^t}(\mathcal{W}_t) \rangle \quad (72)$$

$$= (1 - 2\sigma(\text{DPD}^{\mathcal{D}^t}(\mathcal{W}_t))) (-\langle \nabla_{\mathcal{W}_t} \mathcal{L}_{\text{rec}}^{\mathcal{D}^t}(\mathcal{W}_t), \nabla_{\mathcal{W}_t} \text{DPD}^{\mathcal{D}^t}(\mathcal{W}_t) \rangle). \quad (73)$$

The conclusion follows from the fact that

$$\text{sgn}(x)(1 - 2\sigma(x)) \leq 0, \quad \forall x \in \mathbb{R}. \quad (74)$$

□

B EXPERIMENTS

- Online Appendix: <https://sites.google.com/view/fade-www24/home>.
- GitHub repository: <https://github.com/hsyoo32/fade>
- Official code DOI: <https://doi.org/10.5281/zenodo.10669096>.

B.1 Implementation Details of Competitors

Due to space constraints, the content for §B.1 is available in the Online Appendix: <https://sites.google.com/view/fade-www24/b-1>.

B.2 Software and Hardware Configuration.

Due to space constraints, the content for §B.2 is available in the Online Appendix: <https://sites.google.com/view/fade-www24/b-2>.

B.3 Additional Effectiveness Results

Due to space constraints, the content for §B.3 is available in the Online Appendix: <https://sites.google.com/view/fade-www24/b-3>.

B.4 Comparison of Soft Ranking Methods

Due to space constraints, the content for §B.4 is available in the Online Appendix: <https://sites.google.com/view/fade-www24/b-4>.

B.5 Hyperparameter Analysis

Due to space constraints, the content for §B.5 is available in the Online Appendix: <https://sites.google.com/view/fade-www24/b-5>.